

# KESO 8000Ω<sup>2</sup>

SWISS MADE



A new dimension  
of security

**KESO**  
ASSA ABLOY

With active copy protection, patented until 2034

Experience a safer  
and more open world

## KESO 8000Ω<sup>2</sup>

### The new generation of locking systems.

An important factor for the security of a property is choosing a locking system where the keys and cylinders are equipped with active copy protection.

KESO 8000Ω<sup>2</sup> is the latest generation of mechanical and mechatronic locking systems with new active copy protection. The reversible key system is suitable for both complex and simple locking systems. Thanks to a patent valid until 2034 and functional design protection, the new KESO system offers extremely long investment protection. The system is rounded off with an innovative modular system for problem-free extension or shortening of the cylinders on-site.

KESO locking cylinders have always focused on providing maximum security, with KESO 8000Ω<sup>2</sup>, we are offering optimal protection for the entire locking system.







#### The new KESO system for:

- Greater security
- Greater convenience
- Longer patent protection
- Greater flexibility
- Timeless design



The active copy protection  $\Omega^2$  is only integrated in original KESO key blanks. This means that you are reliably protected against unauthorised copies being made of your key at all times.



The  $\Omega^2$  patent valid until 2034 ensures that only original keys can open the relevant cylinder. Each individual blank is also recorded by us. You therefore benefit from optimal access control – for any number of keys and for the entire service life of your system.



Two independent drilling lines and 15 possible pins offer complex combinatorics for the locking system. This not only guarantees outstanding security, but also a high level of cost-efficiency. With the KESO Locking Concept Planning your system can be expanded and extended at any time. For greater flexibility and optimal investment security.



Universal security measures offer protection from tampering, drilling open, pulling or snapping. For the secure feeling of being optimally protected against intrusion.

## KESO 8000Ω<sup>2</sup>

Innovative technology  
and Swiss precision.

### Active copy protection

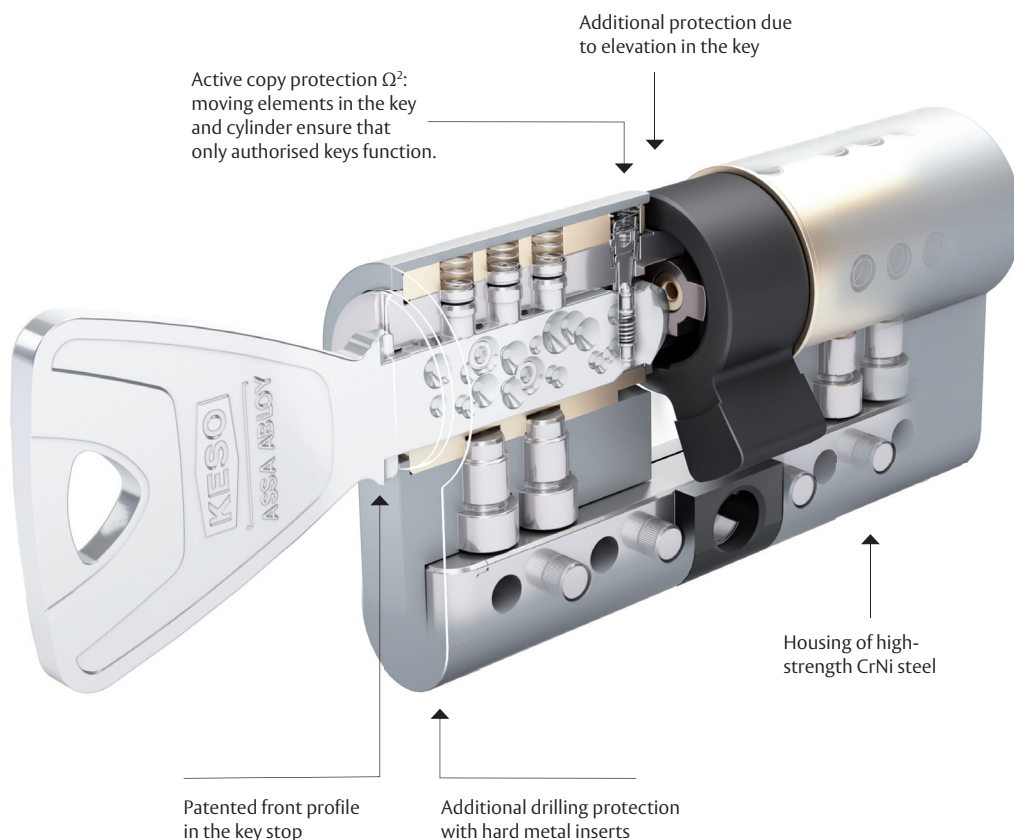
Every key has a moving element that is queried via a special design in the cylinder. This active protection guarantees that only KESO keys can open the KESO cylinder.

### New modular system

The new cylinder design is based on a modular design with insert system. This means that the cylinders can be adapted flexibly and individually, guaranteeing short delivery and installation times.

### Patent valid until 2034

Thanks to a patent valid until 2034 and functional design protection, the KESO system offers an extremely long investment protection.



Download the KESO Virtual Reality App now and experience this picture in 3-D



Security has now become even more secure – for you, for your customers and for everything that's important to you.



### **Active copy protection $\Omega^2$**

The  $\Omega^2$  active copy protection is made up of integrated moving elements in the key that are queried in the cylinder. This guarantees that only original KESO 8000 $\Omega^2$  keys can open the cylinders. These keys are not freely available to purchase on the market, ensuring that only authorised specialist partners can copy keys.

### **Reversible key system**

Two side lines and one top line, up to 15 pins with 4 drilling depths – the KESO reversible key system not only helps to create complex systems, but can also define separate areas within a locking system. Technology rooms can be assigned their own organisational structure, for example, and separated completely from the public area.

### **Investment protection**

Up to 2034 protected blanks for your keys – guaranteed via the internationally protected design of the special elevation on the key shank which is also a technical security element. You benefit from high investment protection for your entire system.

### **Chrome nickel steel housing**

High-strength chrome-nickel steel housing for all BZ and BZ(+) key systems – guaranteeing optimal protection from destructive opening methods. And for lower security requirements – on internal doors, for example – special brass alloys are used.

### **Uncompromisingly secure**

The locking system offers optimal protection against both destructive and non-destructive break-in methods. The use of high-quality materials, targeted use of carbide inserts and complex pinning provides a high level of protection against drilling open, pulling, snapping and picking.



# KESO 8000Ω<sup>2</sup>

## When quality is key.

### Built to the latest standards

Consistent protection of a property is guaranteed if keys and cylinders are both patented and certified. KESO 8000Ω<sup>2</sup> profile cylinders comply with the DIN EN 18252 standard and are certified according to DIN EN 1303\*, VdS\*\* and FZG. All cylinders fulfil the highest requirements for operation, corrosion and locking security.

\* EN 1303:2015-8

\*\* VdS 2344:2014-07

### Drilling protection as standard

In the standard version, KESO 8000Ω<sup>2</sup> is tested in accordance with DIN EN 1303 resistance class D or VdS A.

On request, we can offer even higher protection against drilling open and pulling with VdS – to fulfil your requirements optimally.

### Active key protection

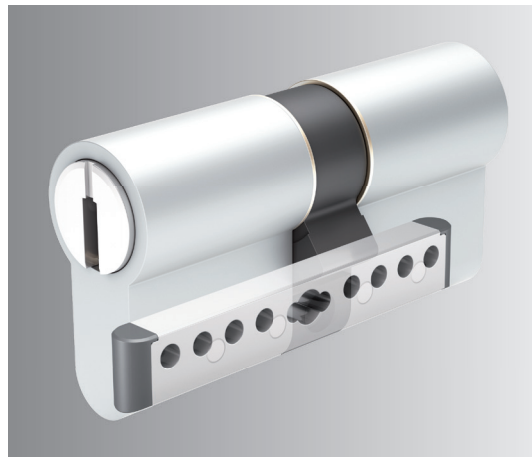
A patent alone does not offer protection from illegal key copies, regardless of whether copying takes place by conventional means or via 3-D printing. To prevent illegal key copies, you need active copy protection in the form of a moving element on the key.



### Optimised protection on all levels

#### Cylinder 81.B15 in accordance with DIN EN 1303 RC D

The all-rounder among cylinders offers outstanding basic protection against snapping attempts, against drilling open with HSS tools and against pulling. Its CNS connecting bar makes this cylinder ideal for closure doors outdoors.



#### Cylinder 81.C15 according to VdS A



These cylinders offer basic protection from drilling open and snapping.

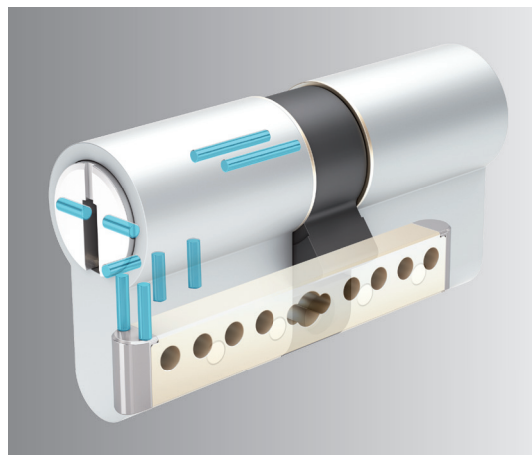
They are particularly suited for doors to apartments in condensed housing development. With carbide inserts in the rotor, this version offers protection from drilling open with carbide and HSS tools.



#### Cylinder 81.D15 according to VdS B



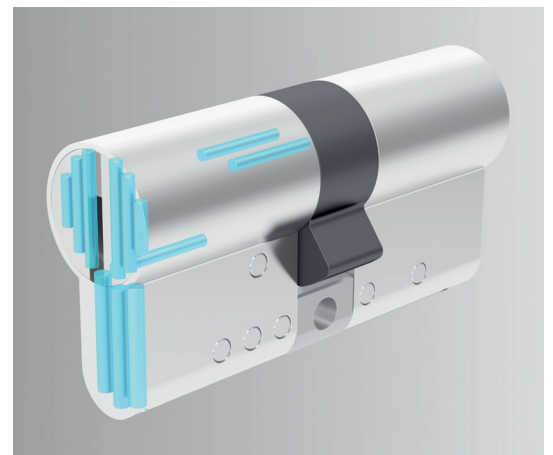
These cylinders offer increased protection against drilling open and snapping. They are particularly suited for important lockable doors, both indoors and outdoors. Multiple carbide pins protect the rotor reliably from drilling open with carbide and HSS tools.



#### Cylinder 81.F15 according to VdS BZ(+)



The latest development in the KESO 8000Q<sup>2</sup> family are the cylinders from the F-series, such as the 81.F15 cylinder – a high-security cylinder with 12 additional hard metal pins for protection against drilling with high-speed milling machines or similar high-tech break-in tools.





## KESO 8000Ω<sup>2</sup>

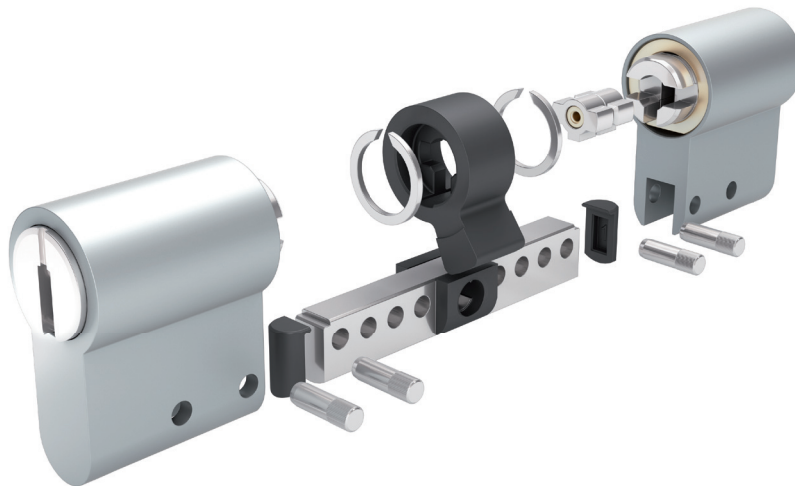
### Convenient flexibility on all levels.

Maximum security and complete practicality in a single system – that's what characterises the solutions from KESO. With KESO 8000Ω<sup>2</sup>, you therefore benefit from a modular system that is not only quick to install, but can also be extended flexibly.

The length of the cylinders can be adapted on site to fit almost all door thicknesses. Different cylinder types can also be integrated in one locking system – from profile cylinders and locking cylinders to padlocks. This provides comprehensive system solutions that can be implemented easily and expanded as required. The benefit for you: lower investment and maintenance costs.

A big bunch of keys  
is a thing of the  
past: just one key is  
required to operate  
multiple cylinders.





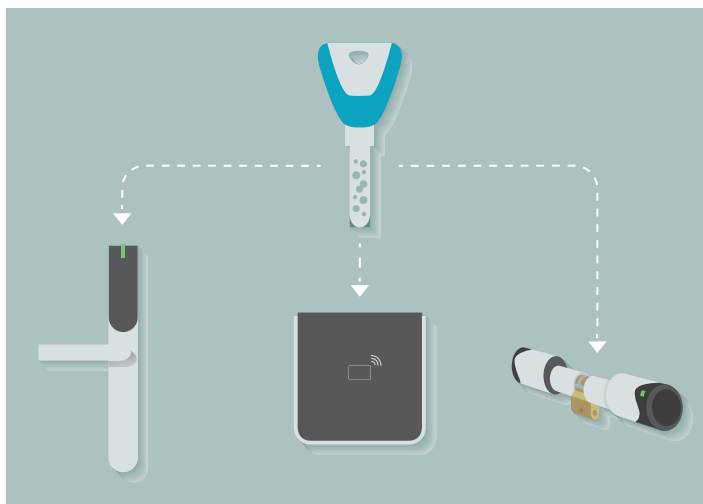
The new modular EU profile system simplifies installation and enables the cylinder length to be adapted flexibly on site.

**New modular system**  
can be extended in 5 mm increments on both sides up to a total length of 240 mm.

**Increased protection**  
against snapping and pulling thanks to a connecting bar made from high-strength chrome-nickel steel

**Insert technology**  
guarantees short delivery times and offers modular protection levels for optimal security thanks to standardised installation components.

## Mechatronic locking system



KESO 8000Ω<sup>2</sup> locking systems are compatible with mechatronic and electronic components of the KESO-Integra platform. Third-party systems, such as time management, can also be operated via a 2nd RFID transponder in the key.

## KESO 8000Ω<sup>2</sup>

Uncompromising quality  
and timeless design.

Convincing quality  
SWISS MADE

Outstanding precision engineering and high-quality design from Switzerland – this is what characterises the keys from KESO. The distinctive trapezoid design guarantees clear identification of the keys, while special embossing techniques create high-contrast surfaces and pleasant haptics. But KESO keys don't just fit comfortably in the hand – they are also extremely eye-catching. Now you can choose from 13 trendy colours – so that your key really is your own personal key.







Group	Identifier	Colour code	RAL
<b>Classic</b>	graphite black	92	RAL 9011
	ultramarine blue	52	RAL 5002
	traffic red	34	RAL 3020
	ruby red	33	RAL 3003
	slate	49	RAL 7031
<b>Tonal</b>	latte macchiato	41	RAL 7032
	petrol	45	RAL 5012
	berry	44	RAL 4001
	avocado	46	RAL 6021
<b>Accent</b>	fluo orange	28	RAL 2005
	fluo yellow	40	RAL 1026
	fluo green	48	RAL 6038
	fluo berry	42	RAL 4010

The colours correspond approximately to the exact RAL values.

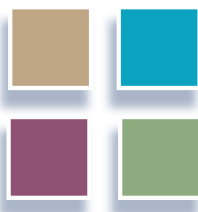
### The new colour scheme

The colour trends in the modern construction industry can be divided into three main categories: classic colours, tonal colours and accent colours. The new coloured cap keys in a total of 13 colours are adapted precisely to these colour trends.



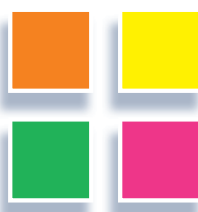
#### Classic colours

Classic colours have specific associations. Blue is regarded as calm, while red is interpreted as happy or alarming. These properties are not only used by architects today, but are also used in facility management in a targeted way.



#### Tonal colours

Local colour refers to the actual colour tone of the material used (e.g. wood) – while the tonal colour is the subjectively perceived colour tone created as a result of lighting or shading, for example. Tonal colours enable you to adapt your keys harmoniously to the surrounding material.



#### Accent colours

Bright accent colours communicate zest for life, gaiety and vibrancy. Accent colours are therefore used ever more frequently in living spaces and are also a real eye-catcher when used as key colours.

The ASSA ABLOY Group is the global leader in access solutions. Every day we help people to feel safer and more secure and to experience a more open world.

**ASSA ABLOY**  
Opening Solutions

Subject to technical changes. PR.01.125[EN\_12\_2020/100

ASSA ABLOY (Schweiz) AG  
Security Systems  
Untere Schwandenstrasse 22  
CH-8805 Richterswil  
Phone +41 44 787 34 34  
[www.assaabloyopeningsolutions.ch](http://www.assaabloyopeningsolutions.ch)

